

# ISOLANA

— RESIDENCES —

FLOOR PLANS

H  
HAYAAT  
DEVELOPMENTS





1 BEDROOM



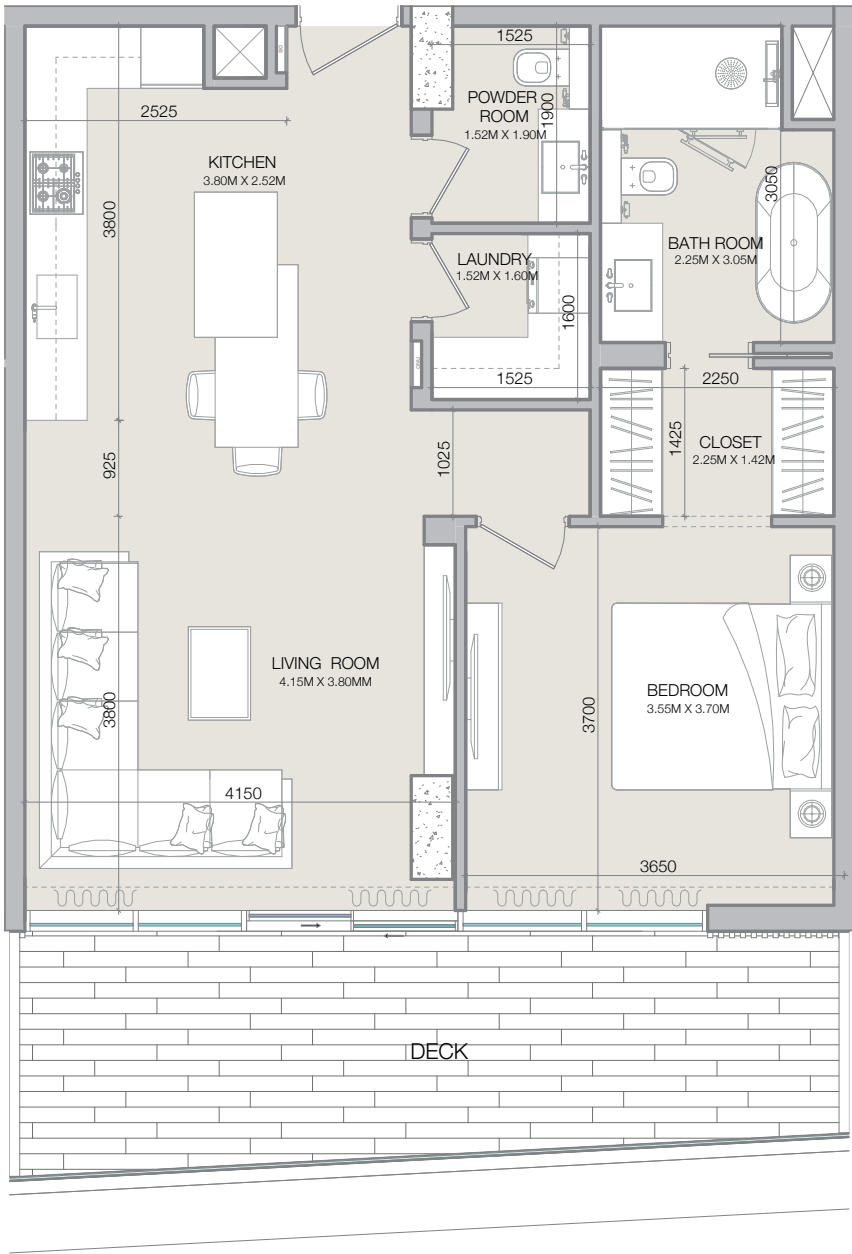
# 1-BEDROOM

TYPE A

ISOLANA

RESIDENCES

1BR-TYPE-A		
	SQ.M	SQ.FT
Apartment	68.96	742.31
Deck	18.10	134.44   194.82   450.58
Total	87.06	876.83   937.13   1,192.97



01 1BR-TYPE-A  
AR70\_0001 SCALE 1:75

Disclaimer: All measurements, dimensions, coordinates, and drawings provided as the Floor Plans in the literature are approximate and provided only for the purpose of marketing, illustration, information, and general guidance, as these drawings are not to scale. All the rooms, sizes, locations, orientations, dimensions, fixtures, fittings, finishes, and specifications (including materials, placement, size of rooms, windows, doors, balconies, and built-in wardrobes) provided in the floor plans may vary as the same have been taken from concept designs prior the actual development/construction. Therefore, their accuracy in relation to the completed construction cannot be confirmed. We make no guarantee, warranty, or representation regarding the accuracy and completeness of the floor plan information, as changes may occur during the development process without notice. Always refer to the latest IFC design available in the sales office for the most accurate representation of all construction details.



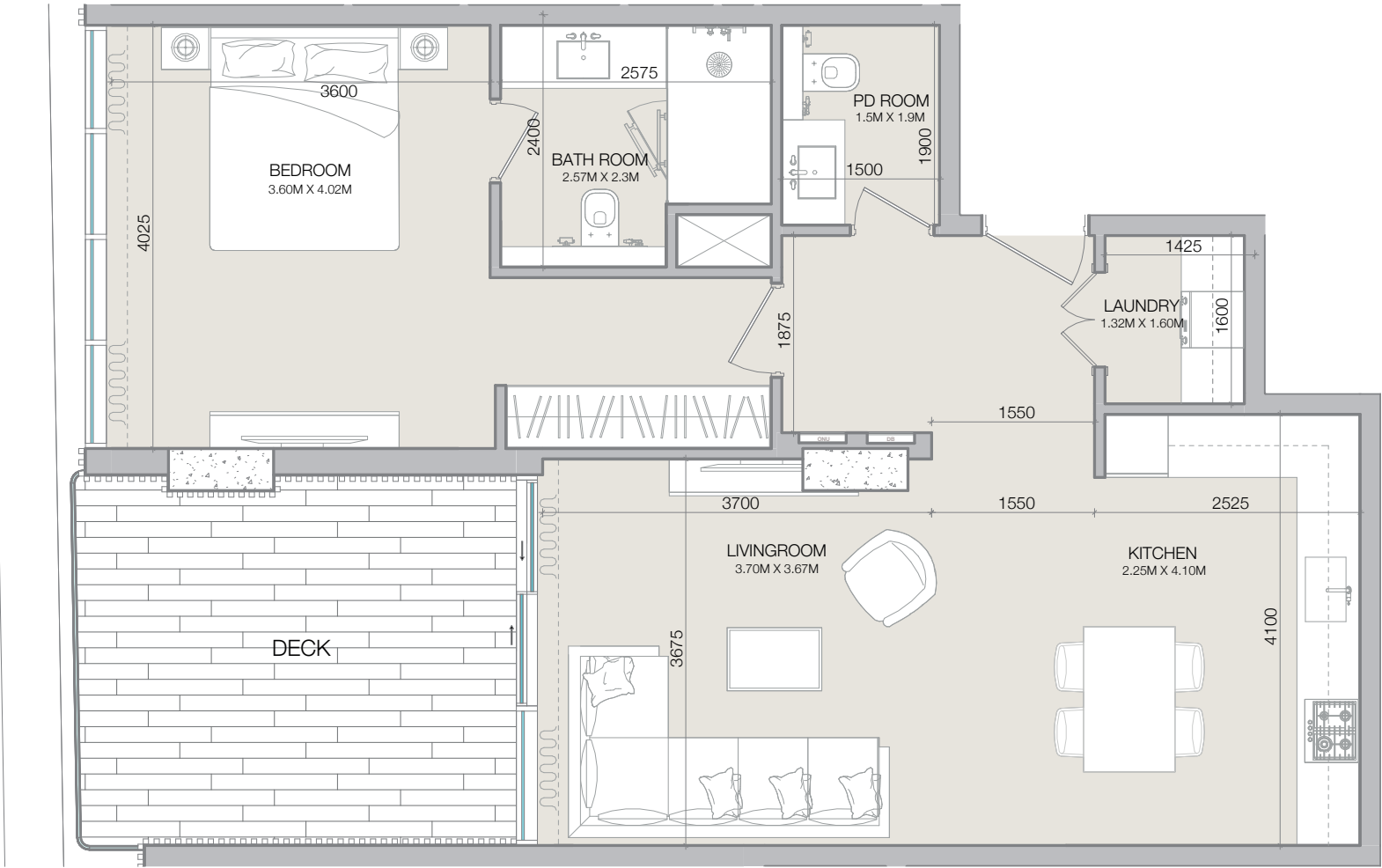
# 1-BEDROOM

TYPE B

ISOLANA

RESIDENCES

1BR-TYPE-B		
	SQ.M	SQ.FT
Apartment	71.45	769.08
Deck	16.15	126.26   173.84
Total	87.60	895.56   942.92





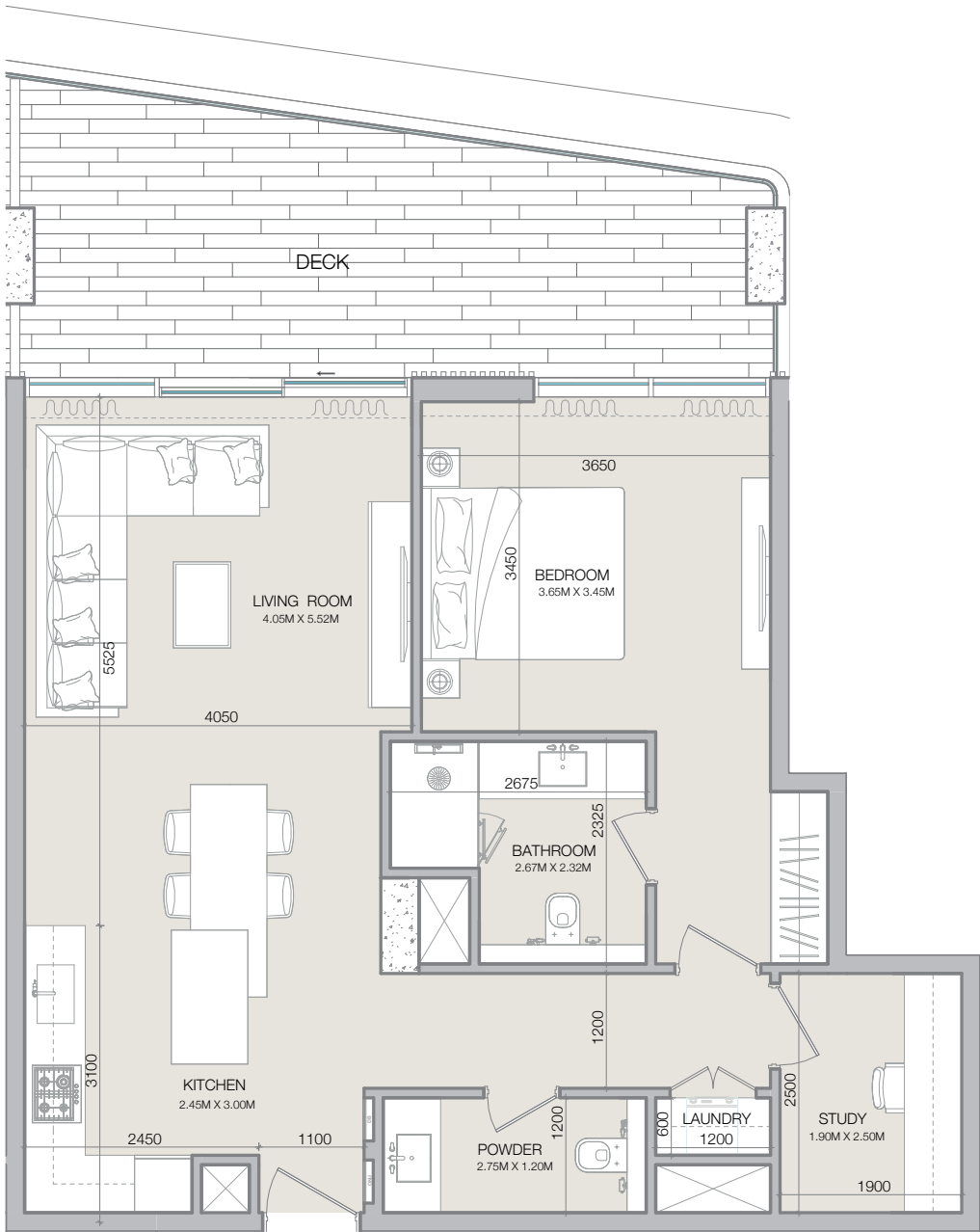
# 1-BEDROOM

TYPE C

ISOLANA

RESIDENCES

1BR-TYPE-C		
	SQ.M	SQ.FT
Apartment	74.66	803.59
Deck	21.33	229.54   170.72
Total	95.98	1,033.13   971.99



03 1BR-TYPE-C  
AR70\_0001 SCALE 1:75

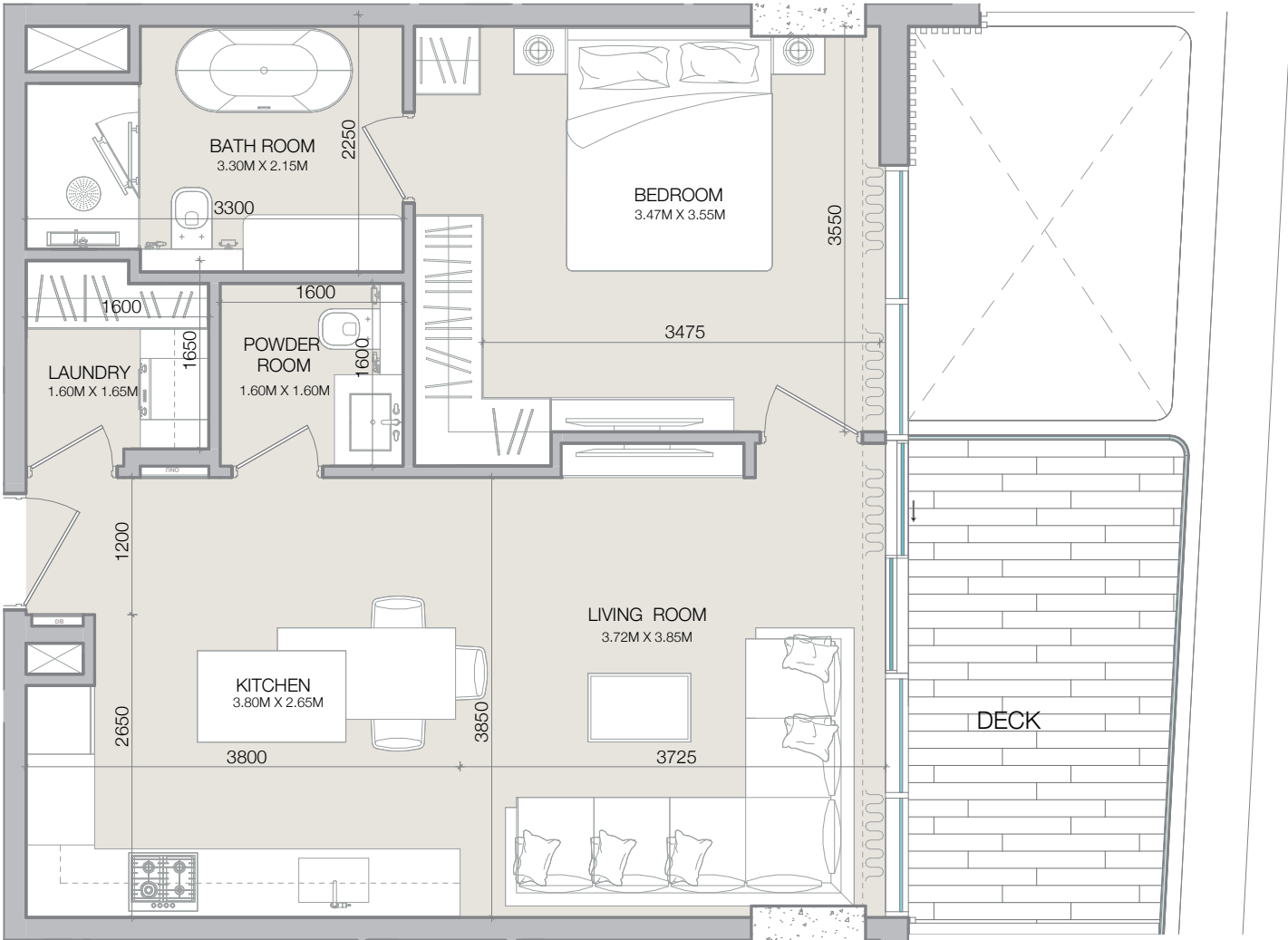
Disclaimer: All measurements, dimensions, coordinates, and drawings provided as the Floor Plans in the literature are approximate and provided only for the purpose of marketing, illustration, information, and general guidance, as these drawings are not to scale. All the rooms, sizes, locations, orientations, dimensions, fixtures, fittings, finishes, and specifications (including materials, placement, size of rooms, windows, doors, balconies, and built-in wardrobes) provided in the floor plans may vary as the same have been taken from concept designs prior the actual development/construction. Therefore, their accuracy in relation to the completed construction cannot be confirmed. We make no guarantee, warranty, or representation regarding the accuracy and completeness of the floor plan information, as changes may occur during the development process without notice. Always refer to the latest IFC design available in the sales office for the most accurate representation of all construction details.



# 1-BEDROOM

TYPE D

1BR-TYPE-D		
	SQ.M	SQ.FT
Apartment	61.11	657.80
Deck	10.38	111.71   141.11
Total	71.49	769.51   798.89



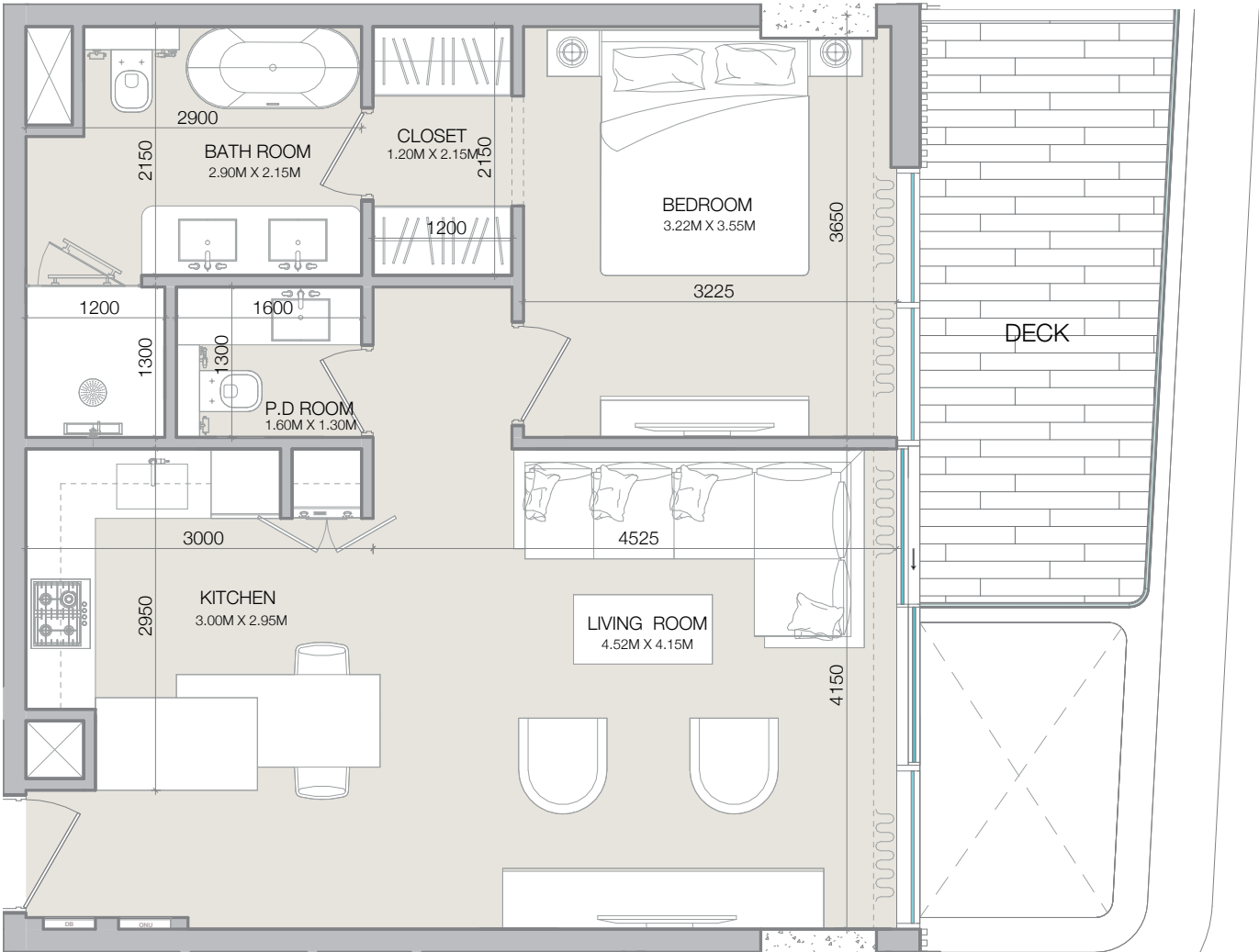


# 1-BEDROOM

TYPE E

ISOLANA  
RESIDENCES

1BR-TYPE-E		
	SQ.M	SQ.FT
Apartment	60.96	656.17
Deck	11.17	115.28   120.23
Total	72.13	771.56   776.40





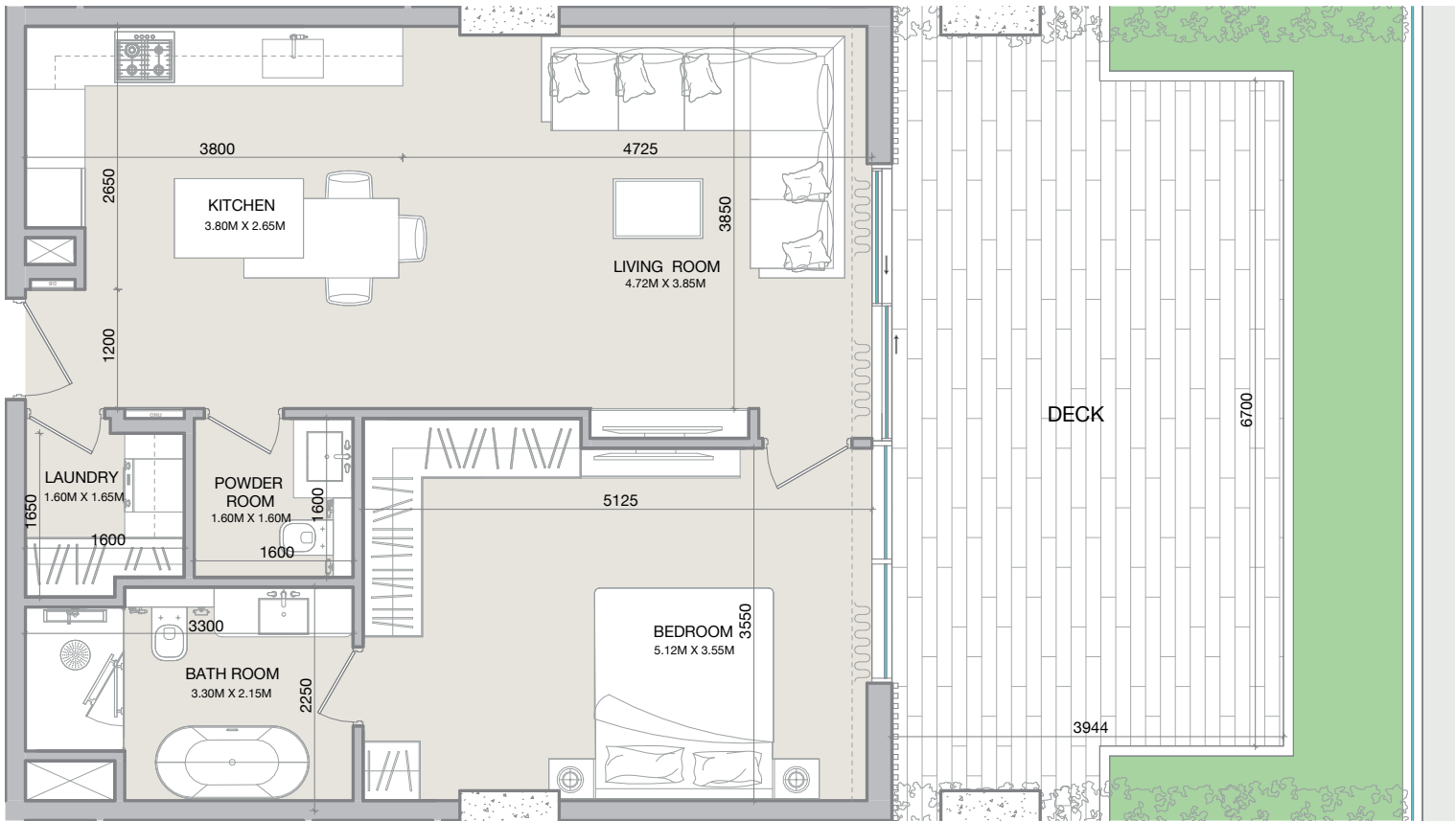
# 1-BEDROOM

TYPE F

ISOLANA

RESIDENCES

1BR-TYPE-F		
	SQ.M	SQ.FT
Apartment	68.98	742.49
Deck	42.73	459.94
Total	111.71	1,202.44







2 BEDROOM



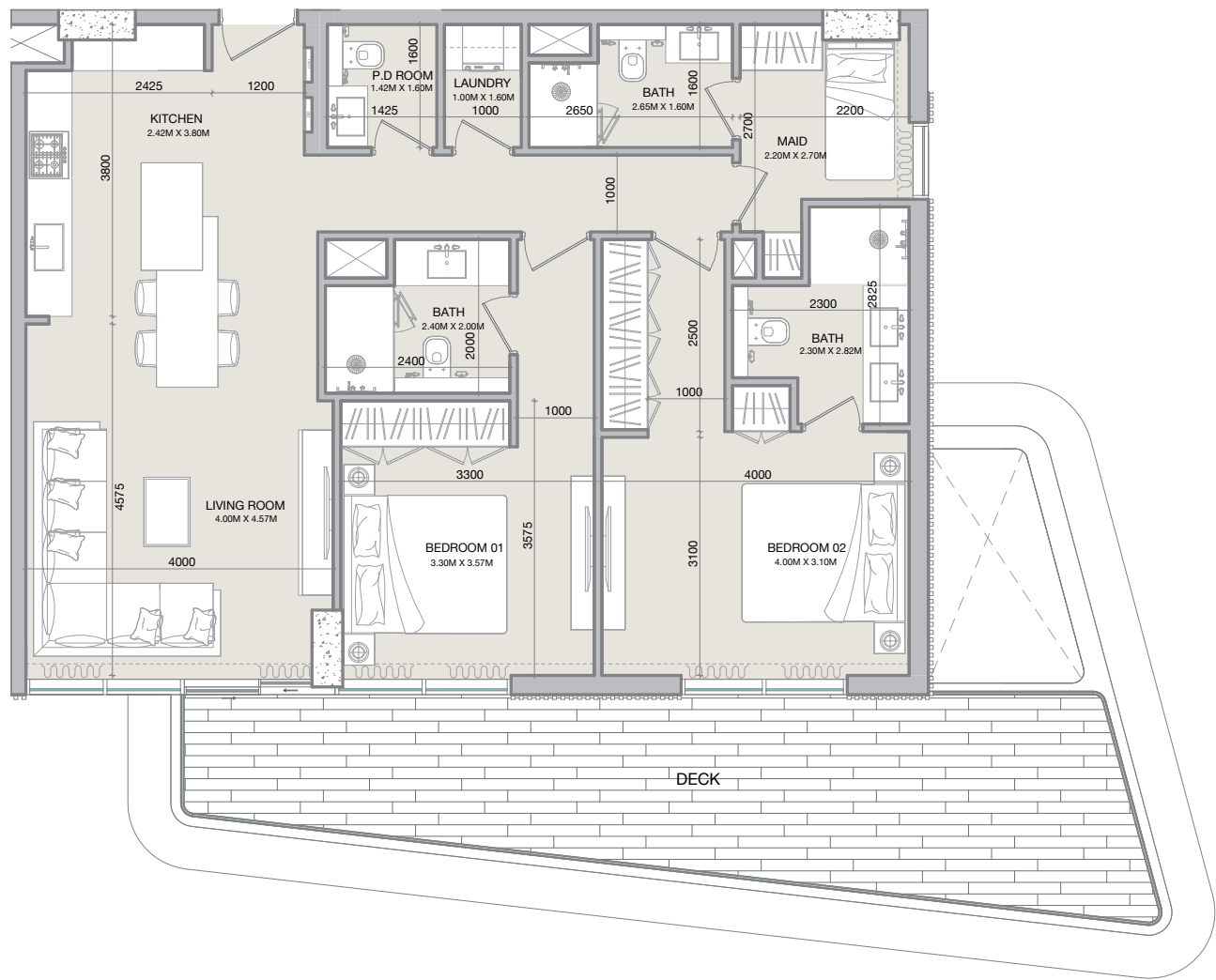
# 2-BEDROOM

TYPE A

ISOLANA

RESIDENCES

2BR-TYPE-A		
	SQ.M	SQ.FT
Apartment	100.82	1,085.25
Deck	28.85	310.51   394.28   664.99
Total	129.67	1,395.75   1,479.71   1,751.07





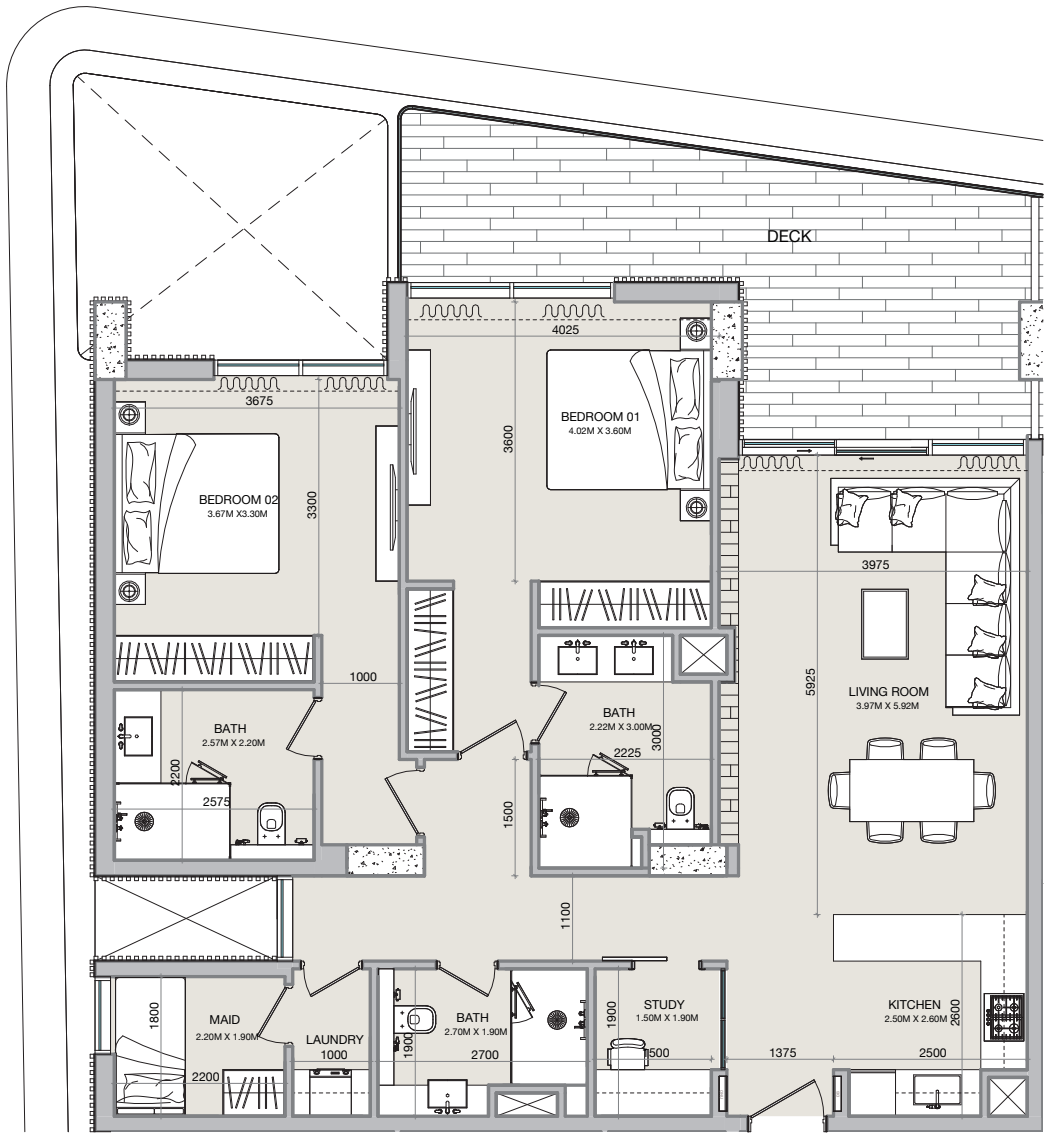
# 2-BEDROOM

TYPE B

ISOLANA

RESIDENCES

2BR-TYPE-B		
	SQ.M	SQ.FT
Apartment	113.03	1,216.62
Deck	22.81	245.52   325.29
Total	135.84	1,462.15   1,542.26





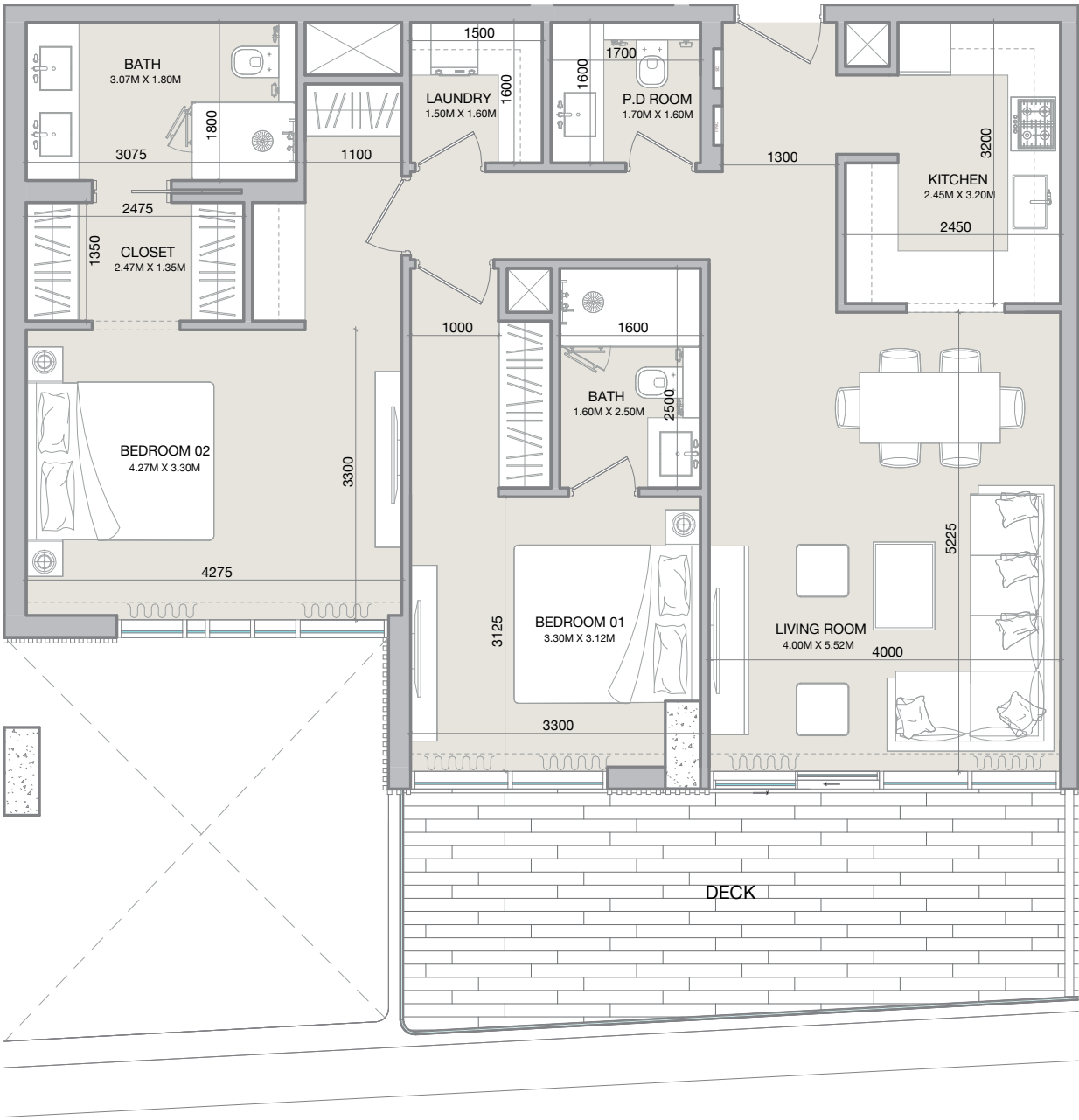
# 2-BEDROOM

TYPE C

ISOLANA

RESIDENCES

2BR-TYPE-C		
	SQ.M	SQ.FT
Apartment	95.90	1,032.26
Deck	20.27	218.18   351.33   763.16
Total	116.17	1,250.44   1,383.48   1,795.31





# 2-BEDROOM

TYPE D

ISOLANA

RESIDENCES

2BR-TYPE-D		
	SQ.M	SQ.FT
Apartment	100.53	1,082.09
Deck	108.81	1,171.22
Total	209.34	2,253.31





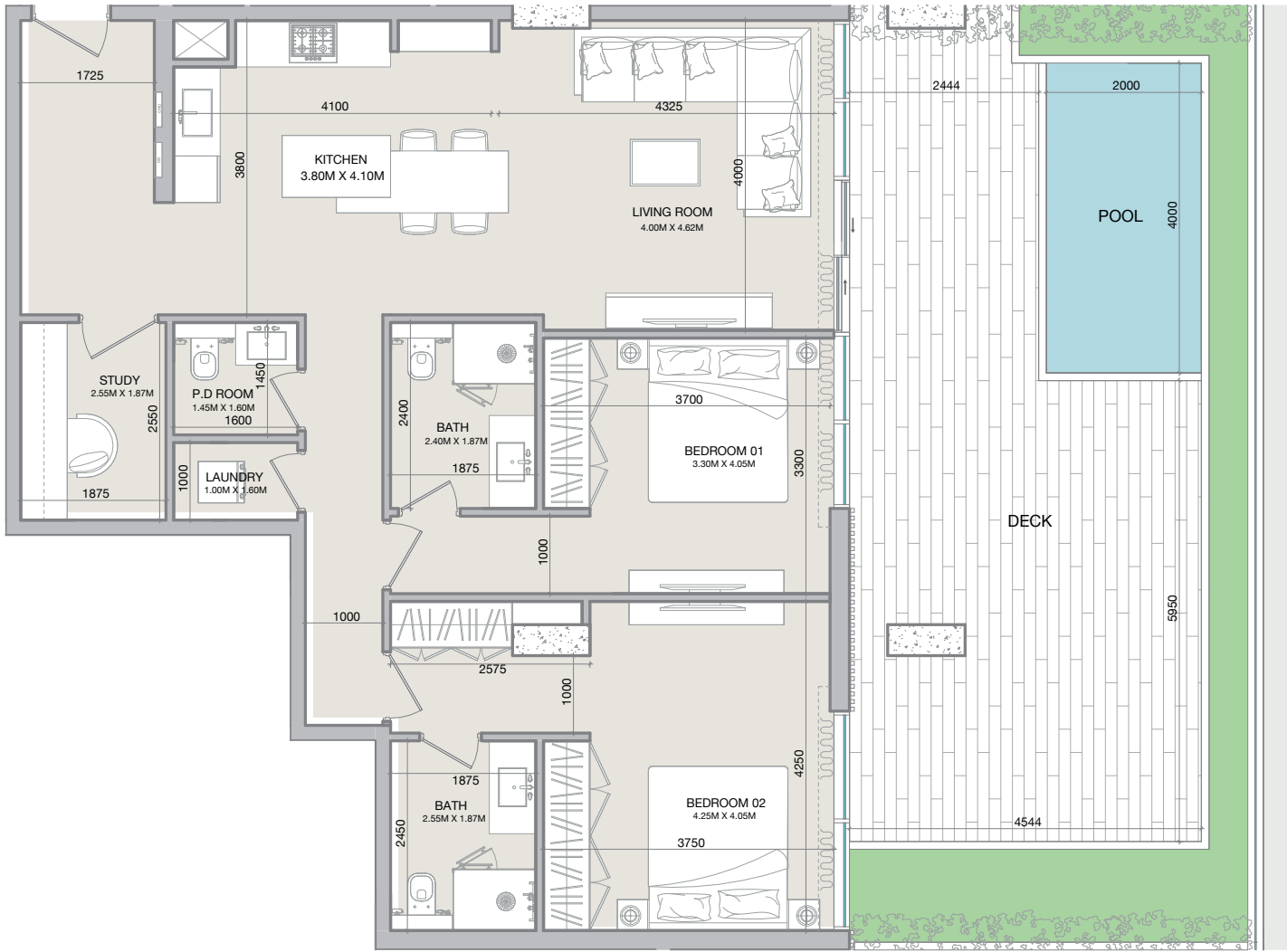
# 2-BEDROOM

TYPE E

ISOLANA

RESIDENCES

2BR-TYPE-E		
	SQ.M	SQ.FT
Apartment	105.24	1,132.79
Deck	63.80	686.74
Total	169.04	1,819.53







3 BEDROOM



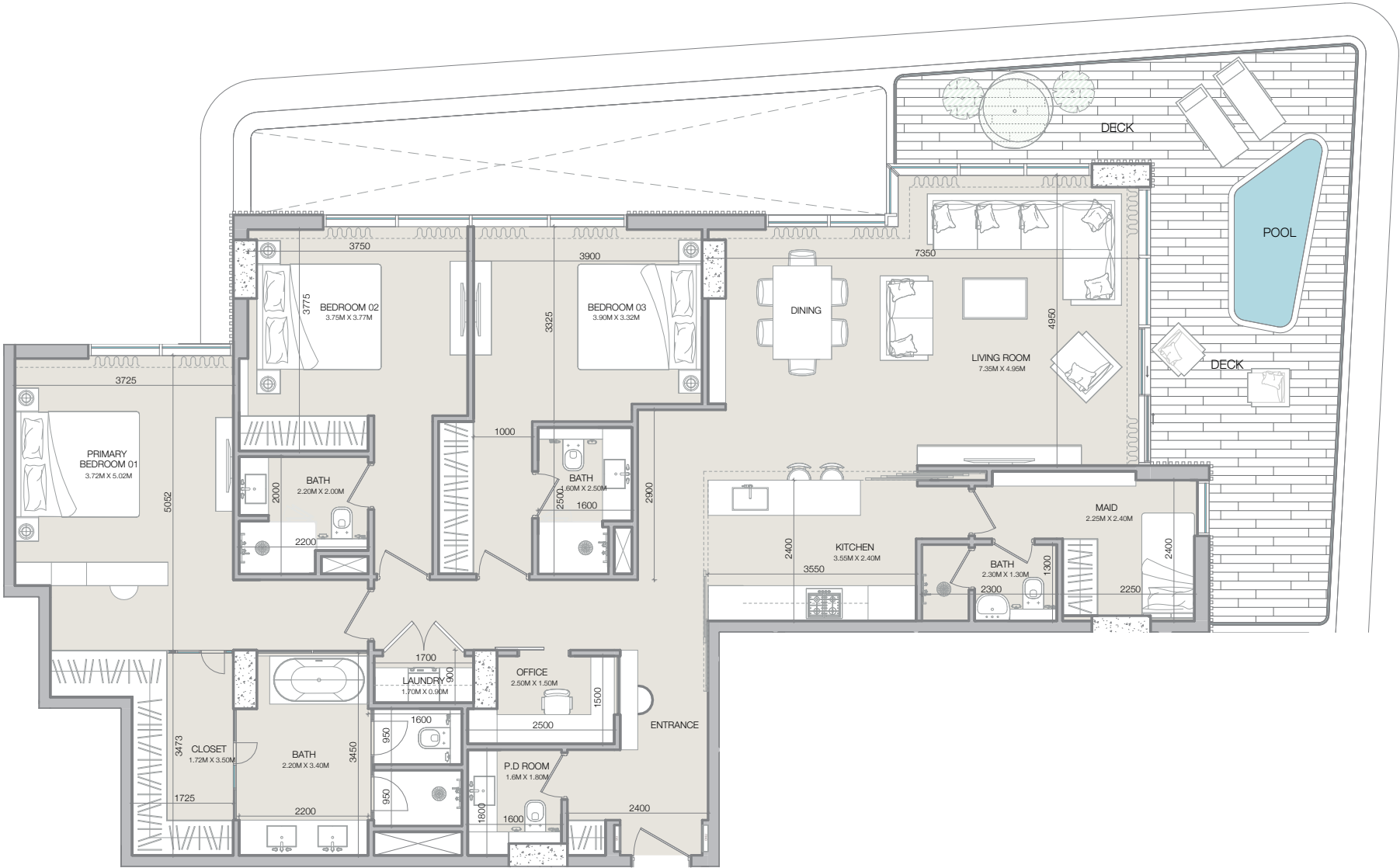
# 3-BEDROOM

TYPE A

ISOLANA

RESIDENCES

3BR-TYPE-A		
	SQ.M	SQ.FT
Apartment	172.15	1,853.02
Deck	37.64	405.20   512.36
Total	209.80	2,258.21   2,365.80





PENTHOUSE



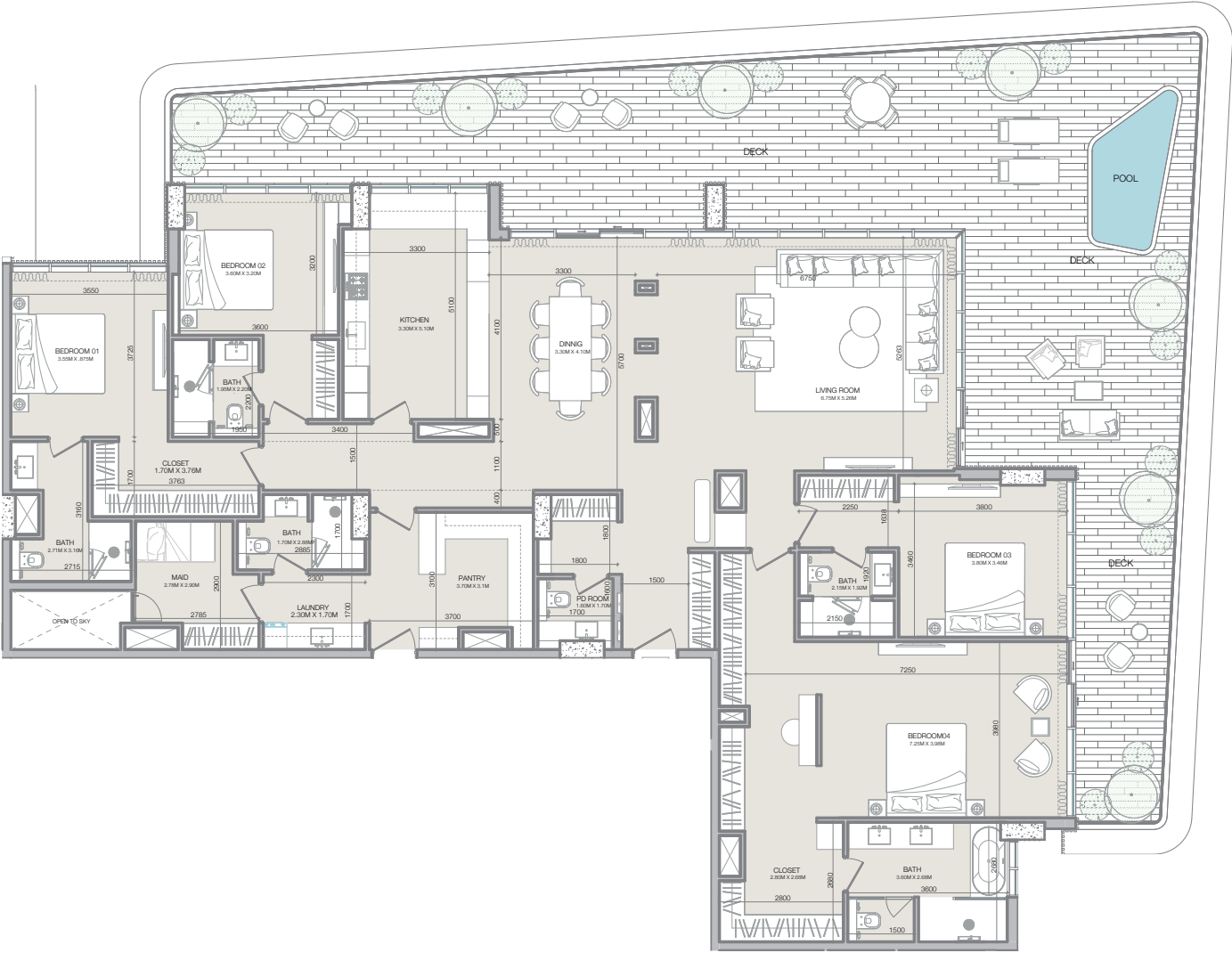
# PENT-HOUSE

TYPE A

ISOLANA

RESIDENCES

PENT-HOUSE-TYPE-A		
	SQ.M	SQ.FT
Apartment	261.41	2,813.81
Deck	129.35	1,392.27
Total	390.76	4,206.08



02 PENT-HOUSE-TYPE-A  
AR70\_0003 SCALE 1:75

Disclaimer: All measurements, dimensions, coordinates, and drawings provided as the Floor Plans in the literature are approximate and provided only for the purpose of marketing, illustration, information, and general guidance, as these drawings are not to scale. All the rooms, sizes, locations, orientations, dimensions, fixtures, fittings, finishes, and specifications (including materials, placement, size of rooms, windows, doors, balconies, and built-in wardrobes) provided in the floor plans may vary as the same have been taken from concept designs prior the actual development/construction. Therefore, their accuracy in relation to the completed construction cannot be confirmed. We make no guarantee, warranty, or representation regarding the accuracy and completeness of the floor plan information, as changes may occur during the development process without notice. Always refer to the latest IFC design available in the sales office for the most accurate representation of all construction details.



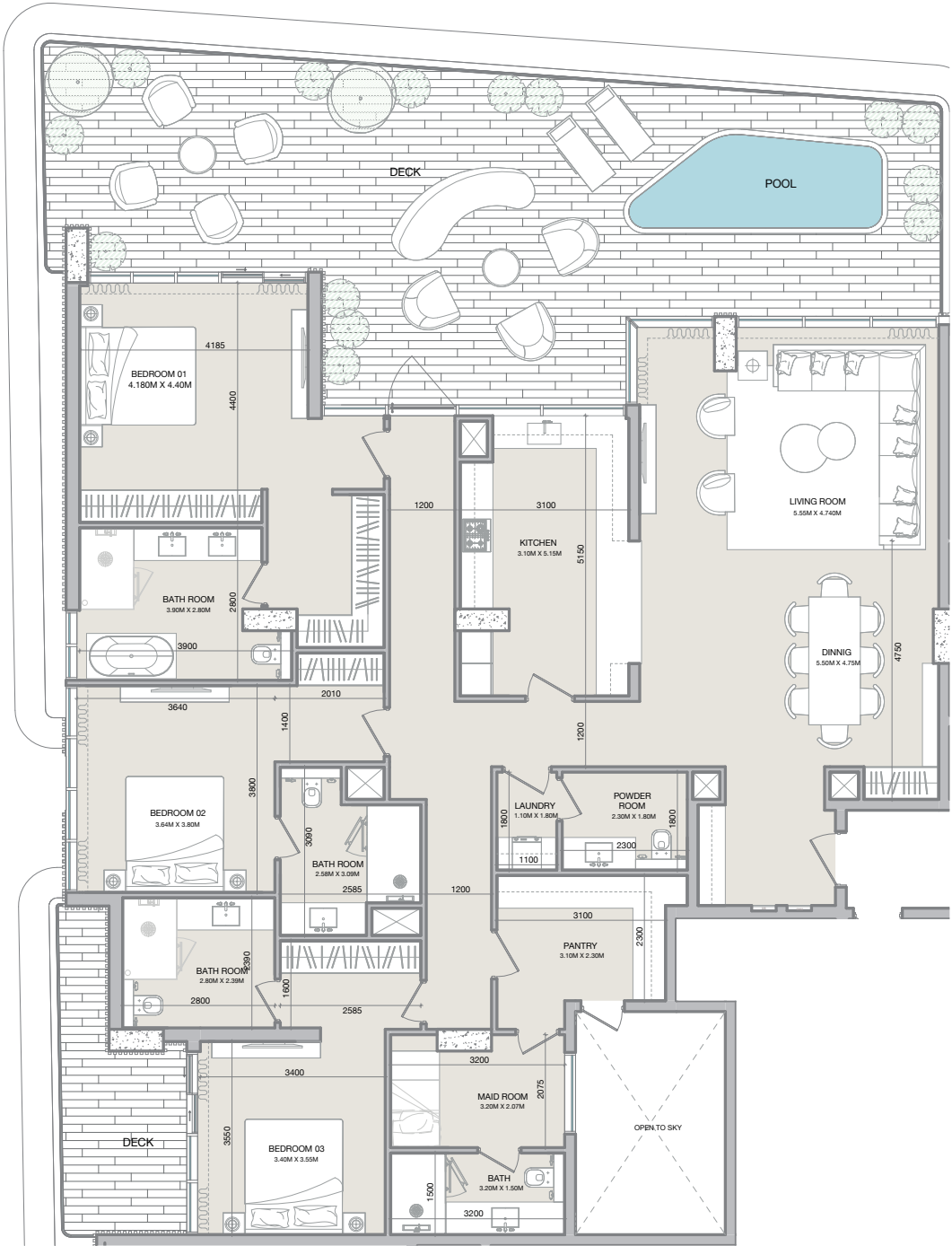
# PENT-HOUSE

TYPE B

ISOLANA

RESIDENCES

PENT-HOUSE-TYPE-B		
	SQ.M	SQ.FT
Apartment	211.23	2,273.60
Deck	104.83	1,128.39
Total	316.06	3,402.00



03 PENT-HOUSE-TYPE-B  
AR70\_0004 SCALE 1:75

Disclaimer: All measurements, dimensions, coordinates, and drawings provided as the Floor Plans in the literature are approximate and provided only for the purpose of marketing, illustration, information, and general guidance, as these drawings are not to scale. All the rooms, sizes, locations, orientations, dimensions, fixtures, fittings, finishes, and specifications (including materials, placement, size of rooms, windows, doors, balconies, and built-in wardrobes) provided in the floor plans may vary as the same have been taken from concept designs prior the actual development/construction. Therefore, their accuracy in relation to the completed construction cannot be confirmed. We make no guarantee, warranty, or representation regarding the accuracy and completeness of the floor plan information, as changes may occur during the development process without notice. Always refer to the latest IFC design available in the sales office for the most accurate representation of all construction details.



# PENT-HOUSE

TYPE C

ISOLANA

RESIDENCES

PENT-HOUSE-TYPE-C		
	SQ.M	SQ.FT
Apartment	194.56	2,094.22
Deck	102.91	1,107.71
Total	297.47	3,201.94



01 PENT-HOUSE-TYPE-C  
AR70\_0004 SCALE 1:75

Disclaimer: All measurements, dimensions, coordinates, and drawings provided as the Floor Plans in the literature are approximate and provided only for the purpose of marketing, illustration, information, and general guidance, as these drawings are not to scale. All the rooms, sizes, locations, orientations, dimensions, fixtures, fittings, finishes, and specifications (including materials, placement, size of rooms, windows, doors, balconies, and built-in wardrobes) provided in the floor plans may vary as the same have been taken from concept designs prior the actual development/construction. Therefore, their accuracy in relation to the completed construction cannot be confirmed. We make no guarantee, warranty, or representation regarding the accuracy and completeness of the floor plan information, as changes may occur during the development process without notice. Always refer to the latest IFC design available in the sales office for the most accurate representation of all construction details.



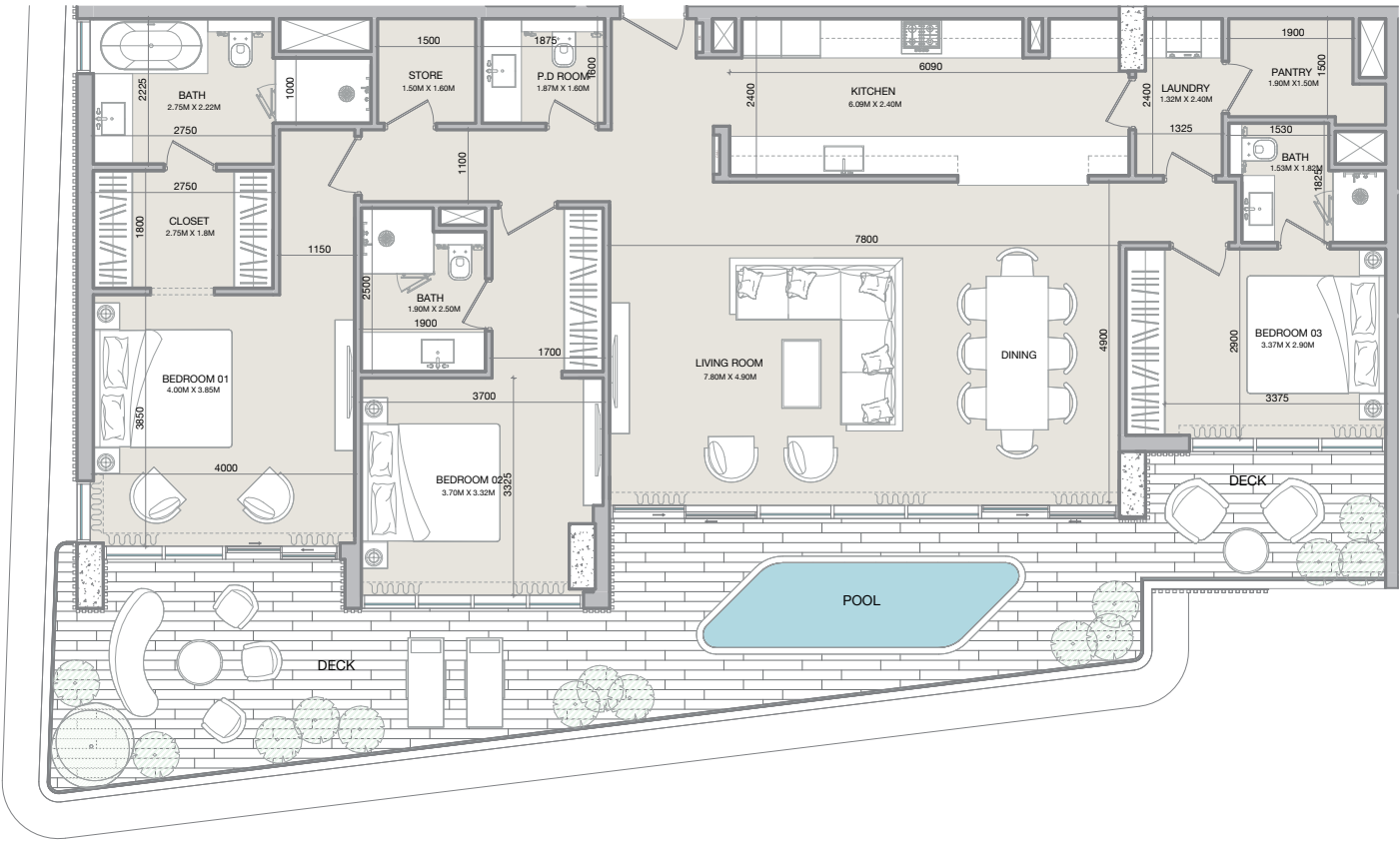
# PENT-HOUSE

TYPE D

ISOLANA

RESIDENCES

PENT-HOUSE-TYPE-D		
	SQ.M	SQ.FT
Apartment	154.46	1,662.56
Deck	54.30	584.48
Total	208.76	2,247.04







[HAYAATDEVELOPMENTS.COM](http://HAYAATDEVELOPMENTS.COM)